



**Steyn Marais**  
0817926588  
steyn@tfre.co.za

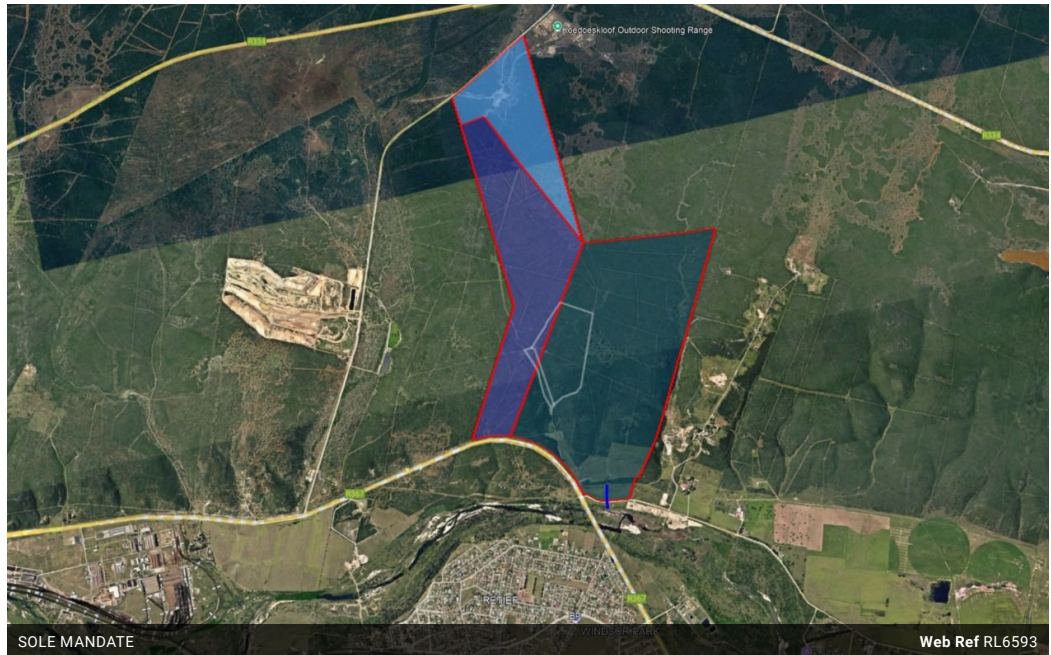


**Ursula Marais**  
0713543216  
ursula@tfre.co.za

Contact TFRE Gqeberha

041 3602455

236 Cape Road  
Mill Park  
Gqeberha



**R11,500,000**

**Monthly Bond Repayment** R118,701.67  
Calculated over 20 years at 11% with no deposit.

**Transfer Costs** R1,157,289.00    **Bond Costs** R94,285.00  
These calculations are only a guide. Please ask your conveyancer for exact calculations.

### 404 Hectare Farm For Sale In Nelson Mandela Bay Rural!!

EXCLUSIVE SOLE MANDATE!!

Located inside the Nelson Mandela Metropole urban edge, on the R367 main road to Uitenhage/Coega.

This vacant land can be used for agriculture or mixed-use, to the prime location near infrastructure and transport routes and proximity to bulk services.

The following options can also be considered: Housing developments, Commercial development, Schooling, Apartments or Share Block schemes or Eco Estate.

A full portfolio with all relevant information will be supplied on request.

The farm is divided into 3 portions and can be purchased separately or as a whole.

Portion 1 offers 208,8308 hectares at R7 800 000 (Excluding Vat).

Portion 7 offers 125,2862 hectares at R4 600 000 (Excluding Vat).

Portion 9 offers 69,9041 hectares at R2 600 000 (Excluding Vat)

Every effort has been made to ensure the

### Features

