



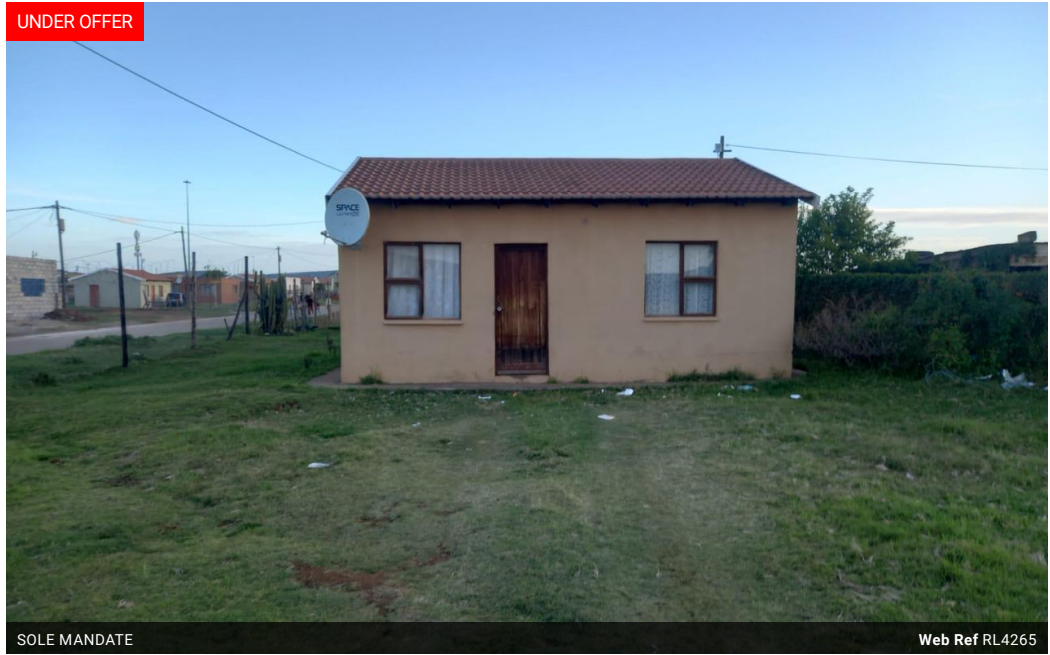
Lutho Lamani
0626582460
lutho@tfre.co.za

Contact TFRE Gqeberha

041 3602455

236 Cape Road
Mill Park
Gqeberha

UNDER OFFER



SOLE MANDATE

Web Ref RL4265



R180,000

🛏 2 🚿 1

Monthly Bond Repayment R1,857.94
Calculated over 20 years at 11% with no deposit.

Transfer Costs R12,067.00 **Bond Costs** R8,485.00
These calculations are only a guide. Please ask your conveyancer for exact calculations.

Monthly Rates R111

HOUSE FOR SALE IN KWA NOBUHLE / GUNGULUZA!!

EXCLUSIVE SOLE MANDATE!!

This property is only 5 minutes walking distance from Midlands College and consist of the following:

2 Bedrooms, Lounge, Kitchen and inside toilets.

The yard has a lot of potential for investors who are looking to build flats in that area.

Estimated rates: R111pm.

Contact me for more information and viewing of the property!!

Every effort has been made to ensure the content of this advert is correct, however, no responsibility will be borne for any errors or omissions it may contain.

Features

Pets Allowed	Yes			
Interior		Exterior		Sizes
Bedrooms	2	Security	No	Land Size
Bathrooms	1	Pool	No	363m ²
Kitchens	1	Views	False	
Recep. Rooms	1			
Furnished	No			

