



Thozama Nqini
0730315613
thozama@tfre.co.za

Contact TFRE Gqeberha

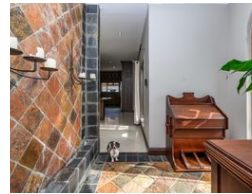
041 3602455

236 Cape Road
Mill Park
Gqeberha



SOLE MANDATE

Web Ref RL6640



R2,990,000

Monthly Bond Repayment R30,862.43
Calculated over 20 years at 11% with no deposit.

Transfer Costs R159,255.00 **Bond Costs** R42,185.00
These calculations are only a guide. Please ask your conveyancer for exact calculations.

Monthly Rates R2,455.1

4 3 3

WELCOME TO THIS STYLISH AND CLASSY HOME WITH MORDEN FINISHES.

This home is everything you have been dreaming of and it ticks all the boxes!

As you enter the front gate, you are welcomed by a glass front door leading to the open-plan living areas, dining room, lounge and TV lounge.

To your right is a well-fitted office space with a sliding door to the courtyard, braai area, and standard-size pool.

The beautifully fitted kitchen has marble countertops, a gas stove, an under-counter oven, and ample storage space. The ceramic floor tiles help with easy maintenance and cleaning. The scullery has built-in cupboards and the laundry area has a door that leads out to the back and washlines.

The passage leads to the guest bedroom with an en-suite bathroom. Down the one left wing is the main bedroom with an en-suite bathroom and walk-in closet.

To the left is a linen cupboard with mirror...

Features

Pets Allowed Yes

Interior

Bedrooms	4
Bathrooms	3
Kitchens	1
Recep. Rooms	3
Studies	1
Furnished	No

Exterior

Garages	3
Security	Yes
Pool	Yes
Views	False

Sizes

Floor Size	432m ²
Land Size	812m ²

