



**Bryan Jonker**  
0636481336  
bryan@tfre.co.za

Contact TFRE Gqeberha

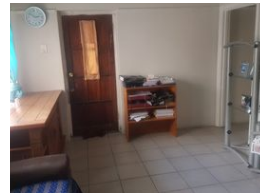
041 3602455

236 Cape Road  
Mill Park  
Gqeberha



SOLE MANDATE

Web Ref RL6705



**R325,000**

1 1

**Monthly Bond Repayment** R3,354.61  
Calculated over 20 years at 11% with no deposit.

**Transfer Costs** R16,346.00    **Bond Costs** R11,560.00  
These calculations are only a guide. Please ask your conveyancer for exact calculations.

**Monthly Levy** R2,080    **Monthly Rates** R400

**Investment!!**

Great Investment!

This ground-floor corner unit, 1 bedroom, 1 bathroom, separate kitchen and large lounge flat is the perfect investment or lock up and go or for a first-time home buyer or someone looking to downsize.

The ground floor flat is situated in an up-and-coming block with aluminium windows and is fully enclosed with access control..

It has a pre-paid electricity meter.

Currently tenanted at R4000, Levies R2080, Rates and Taxes R400, selling for R325 000.

The property is being sold Voetstoots, As Is and requires work/TLC.

Contact me now for your private viewing.

Every effort has been made to ensure the content of this advert is correct, however, no responsibility will be borne for any errors or omissions it may contain

**Features**

Interior		Exterior		Sizes	
Bedrooms	1	Security	Yes	Floor Size	54m <sup>2</sup>
Bathrooms	1	Pool	No		
Kitchens	1	Views	False		
Recep. Rooms	1				
Furnished	No				

