

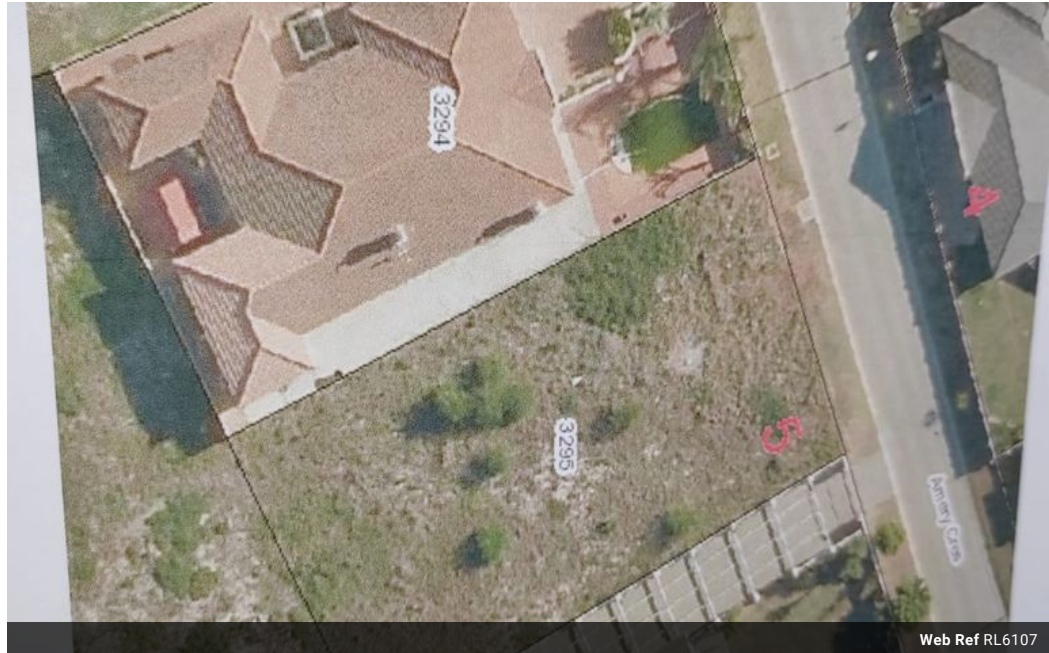


Kwame Nicol
0780531462
kwame@tfre.co.za

Contact TFRE Gqeberha

041 3602455

236 Cape Road
Mill Park
Gqeberha



Web Ref RL6107



R1,000,000

Monthly Bond Repayment R10,321.88

Calculated over 20 years at 11% with no deposit.

Transfer Costs R30,412.00 **Bond Costs** R23,335.00

These calculations are only a guide. Please ask your conveyancer for exact calculations.

GRAB THIS QUICK

800sq Plot in a quiet road (Amery Crescent) in Summerstrand.

This is the only remaining plot in this part of Summerstrand.

There are houses on both sides of the plot.

Build your dream home here or rezone to res 3 and build apartments or flats as a developer.

Very close to all amenities.

Features