

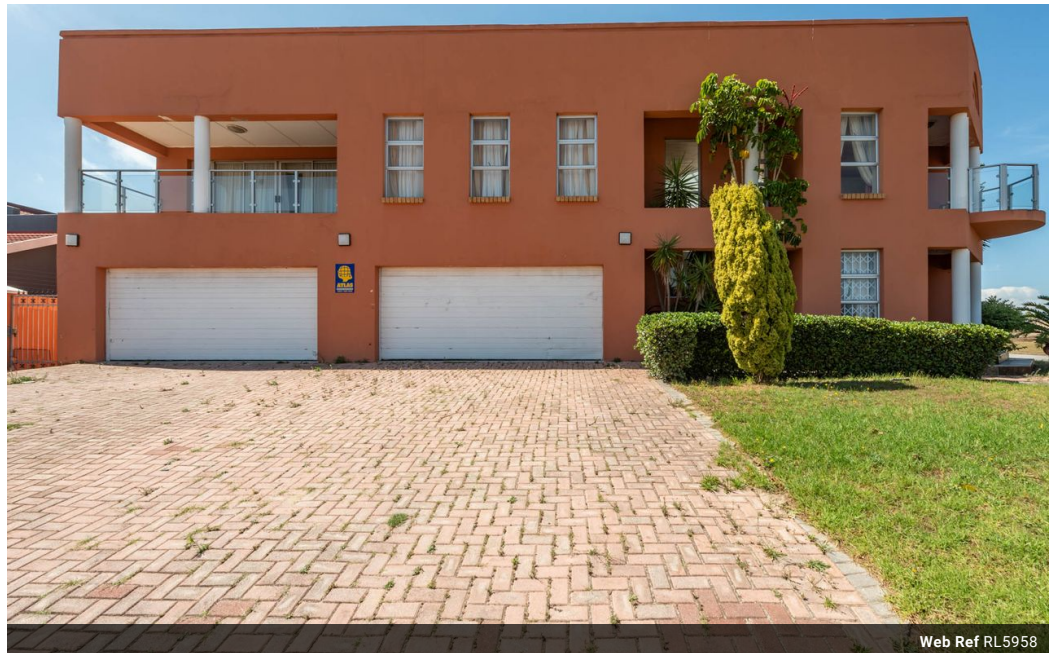


Pro Manqoyi
0711940276
pro@tfre.co.za

Contact TFRE Gqeberha

041 3602455

236 Cape Road
Mill Park
Gqeberha



Web Ref RL5958



R3,999,999

8 Bedrooms, 4 Bathrooms, 2 Garages

Monthly Bond Repayment R41,287.53
Calculated over 20 years at 11% with no deposit.

Transfer Costs R281,049.89 **Bond Costs** R51,610.00
These calculations are only a guide. Please ask your conveyancer for exact calculations.

Monthly Rates R5,513.8

8 Bedroom House with 1 Flatlet for sale in Summerstrand, Port Elizabeth!

A beautiful gem located at the heart of Summerstrand!

I call all investors (but not limited to) in the student accommodation field to view this property to avoid missing out. It is also suitable for investors interested in running a guest house near the beach, and popular amenities like Boardwalk and many other popular restaurants.

This 8-bedroom property is a few kilometres from NMMU, High School Pearson, and Summerwood Primary School.

Key highlights:

8 Bedrooms, 4 bathrooms, lounge, entertainment area/bar, kitchen and double garage.

1 Bedroom flatlet.

Estimated Rates: R513.83pm

A decent amount of land makes up the backyard.

Features

Pets Allowed		Yes			
Interior		Exterior		Sizes	
Bedrooms	8	Garages	2	Land Size	1,322m ²
Bathrooms	4	Security	No		
Kitchens	1	Pool	No		
Recep. Rooms	1	Views	True		
Furnished	No				

