

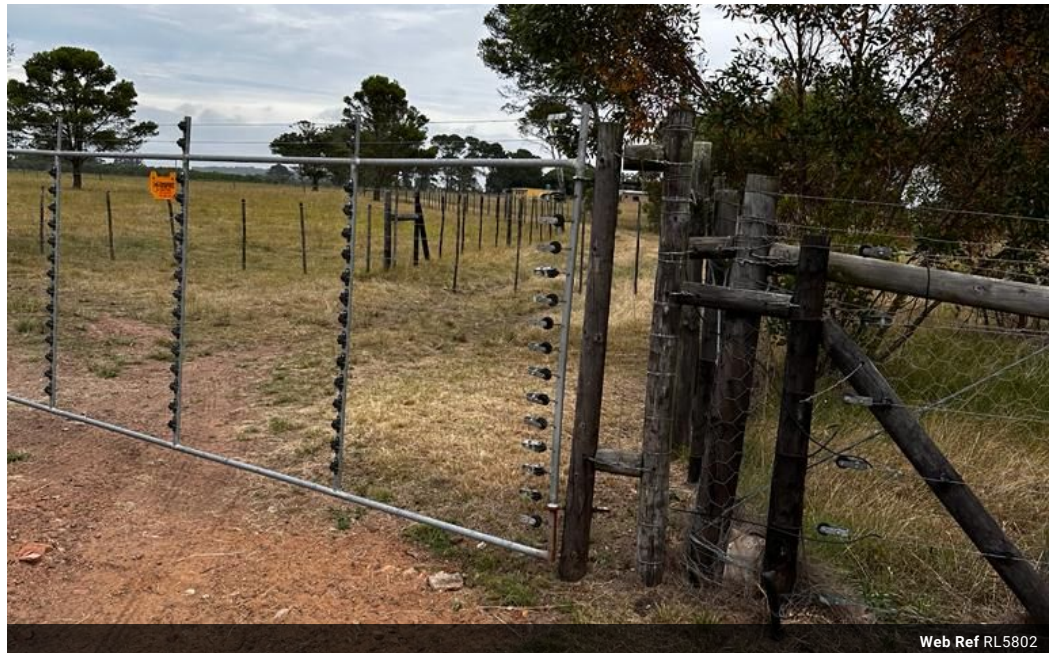


Graham White
0764886464
graham@tfre.co.za

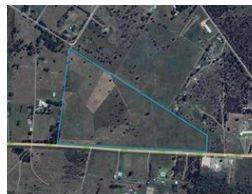
Contact TFRE Gqeberha

041 3602455

236 Cape Road
Mill Park
Gqeberha



Web Ref RL5802



R2,650,000

Monthly Bond Repayment R27,352.99

Calculated over 20 years at 11% with no deposit.

Transfer Costs R129,887.00 **Bond Costs** R40,300.00

These calculations are only a guide. Please ask your conveyancer for exact calculations.

21 ha Farmland with a dam, fenced-in, Electrified. 2 Entrance gates on Cape Rd Great for Logistics

It is ideally situated with access to Cape Road.

21 Hectares of grazing pasture camps in Rendallton, St. Albans.

It is divided into 12 grazing camps for cattle.

It can also be used for sheep, pigs, chickens or goats.

The property is fully fenced-in, with electric fencing and has a dam.

2 Entrance gates (one of which is on Cape Road) give easy access to the farm from a main tarred road.

The topography of the land is flat. with is own dam with water.

Every effort has been made to ensure the content of this advert is correct, however, no responsibility will be borne for any errors or omissions it may contain.

Features

