



**Nqabisa Gwelana**  
0732612589  
nqabisa@tfre.co.za

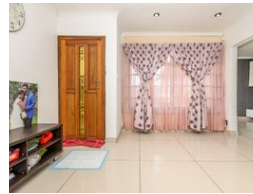
Contact TFRE Gqeberha

041 3602455

236 Cape Road  
Mill Park  
Gqeberha



Web Ref RL6411



**R1,445,000**

**Monthly Bond Repayment** R14,915.12  
Calculated over 20 years at 11% with no deposit.

**Transfer Costs** R44,135.00    **Bond Costs** R28,990.00

These calculations are only a guide. Please ask your conveyancer for exact calculations.

**Monthly Rates** R1,400

3    2    2

**Beautiful Family Home For Sale in Sherwood.**

This home is located in the heart of Sherwood on a quiet street.

It boasts 3 laminated bedrooms and two bathrooms - a main bedroom with a shower.

The spacious lounge connects to the indoor braai area and a bar, all in one place, convenient for any weather and for hosting family, friends, or just a simple super braai.

The kitchen fitted with built-in cupboards spills over to the dining area.

At the back of the property is a safe play area for kids, picnics or pets.

The double remote-controlled garage interleads into the house.

The house is fitted with an alarm system.

Call me today for a private viewing.

Every effort has been made to ensure the content of this advert is correct. However, no responsibility will be borne for any errors or

**Features**

**Pets Allowed**                      Yes

**Interior**  
Bedrooms                      3  
Bathrooms                      2  
Kitchens                        1  
Recep. Rooms                2  
Furnished                      No

**Exterior**  
Garages                         2  
Carports / Parkings        4  
Security                        Yes  
Pool                              No  
Views                             False

**Sizes**  
Land Size                      635m<sup>2</sup>

