



**Sharon Towns**  
076 826 3474  
sharont@tfre.co.za

Contact TFRE Gqeberha

041 3602455

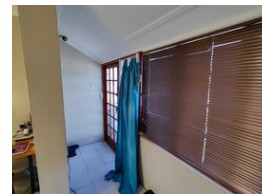
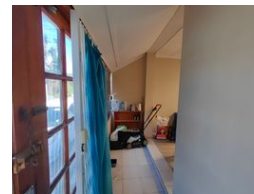
236 Cape Road  
Mill Park  
Gqeberha

NEW



SOLE MANDATE

Web Ref RL6744



**R590,000**

2 1

**Monthly Bond Repayment** R6,089.91

Calculated over 20 years at 11% with no deposit.

**Transfer Costs** R21,217.00 **Bond Costs** R15,795.00

These calculations are only a guide. Please ask your conveyancer for exact calculations.

**Monthly Rates** R542

## 2 Bedroom semi-detached house in Richmond Hill

This cozy 2 bedroom home is ideal for the first time buyer or an investor.

It is in need of some TLC. Just a bit of paint & sandpaper and it will be good as new.

As you enter this home it takes you into an entrance hall which leads straight into your open plan lounge and kitchen area.

Adjacent to the kitchen are a few steps which takes you into your scullery where you will find the double sink and more kitchen cupboards.

This room leads you into the bathroom which has a toilet, basin and shower over the bath – all in one.

The two bedrooms have built in cupboards. The main bedroom has an enclosed balcony with a sea view where you can enjoy your morning coffee or tea.

The compact backyard you can create your own dreamy oasis.

Call now to view.

Every effort has been made to ensure the content of this advert is correct,...

## Features

**Pets Allowed** Yes

### Interior

Bedrooms	2
Bathrooms	1
Kitchens	1
Recep. Rooms	1
Furnished	No

### Exterior

Security	No
Pool	No
Views	False

