



Kwame Nicol
0780531462
kwame@tfre.co.za

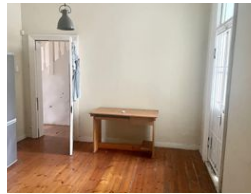
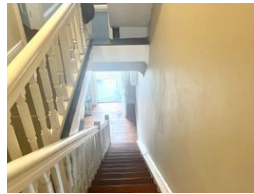
Contact TFRE Gqeberha

041 3602455

236 Cape Road
Mill Park
Gqeberha



Web Ref RL3637





R1,200,000

Monthly Bond Repayment R12,386.26
Calculated over 20 years at 11% with no deposit.

Transfer Costs R32,749.00 **Bond Costs** R25,220.00

These calculations are only a guide. Please ask your conveyancer for exact calculations.

 4  2

HURRY UP FOR THIS ONE!

Double-storey property situated on a quiet street in Central.

Currently used as student accommodation with students.

Wooden and tiled floors and very spacious.

Very secure and close to all amenities.

Easy access to transport and town.

Every effort has been made to ensure the content of this advert is correct, however, no responsibility will be borne for any errors or omissions it may contain

Features

Interior

Bedrooms 4
Bathrooms 2
Recep. Rooms 1
Furnished No

Exterior

Security No
Pool No
Views False

