



Vikki Hohana
0614449208
vikki@tfre.co.za

Contact TFRE Gqeberha

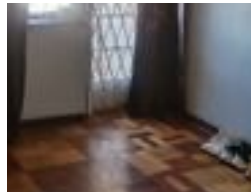
041 3602455

236 Cape Road
Mill Park
Gqeberha



SOLE MANDATE

Web Ref RL6455



R310,000

Monthly Bond Repayment R3,199.78
Calculated over 20 years at 11% with no deposit.

Transfer Costs R16,346.00 **Bond Costs** R11,560.00

These calculations are only a guide. Please ask your conveyancer for exact calculations.

🛏️ 2 🚿 1 🚗 1

Great location and value!!

This once-in-a-lifetime opportunity is now available at an incredibly affordable price.

Perfectly located in the heart of North End, just a short walk to Pier 14 Shopping Centre, closer to the main road, public transport, and all amenities.

At 85 square meters, this first-floor unit features:

2 Bedrooms with wooden floors
Tiled kitchen
Lounge and a family bathroom
Garage for safe and secure parking.

Should you consider purchasing it as an investment, look no further, as we are able to assist you with the rental management of the property.

Great rental income opportunity!!

Features

Interior		Exterior		Sizes	
Bedrooms	2	Garages	1	Floor Size	85m ²
Bathrooms	1	Carports / Parkings	1		
Kitchens	1	Security	No		
Recep. Rooms	1	Pool	No		
Furnished	No	Views	False		

