



**Talana Foot**  
Principal Property Practitioner  
Registered with PPRA (FFC 114 313 2)  
082 459 3369  
talana@tfre.co.za



**Ruan Muller**  
072 774 9833  
ruan@tfre.co.za

Contact TFRE Gqeberha

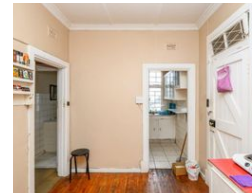
041 3602455

236 Cape Road  
Mill Park  
Gqeberha



SOLE MANDATE

Web Ref RL6452



**R420,000**

2 Bedrooms 1 Bathroom

**Monthly Bond Repayment** R4,335.19  
Calculated over 20 years at 11% with no deposit.

**Transfer Costs** R17,928.00    **Bond Costs** R12,935.00  
These calculations are only a guide. Please ask your conveyancer for exact calculations.

**Monthly Levy** R1,227    **Monthly Rates** R515.0    **Special Levy** R100

Serious Seller ..... give away price!

Perfect buy to call your own!

Come view this spacious apartment at Eastbourne Court, perfect for the bigger family! Discover the ideal blend of comfort and convenience in this delightful 111-square-meter apartment. Nestled in Mount Croix, this home offers a cozy lounge area, a spacious kitchen, and two spacious bedrooms with the main bedroom having built-in cupboards.

Plus, with your own allocated parking bay, coming home has never been easier.

Whether you're a first-time buyer, looking to downsize, or a property investor, this property offers a fantastic opportunity to live in a great location.

Don't miss out on scheduling your viewing today! Serious Seller!

Every effort has been made to ensure the content of this advert is correct, however, no responsibility will be borne for any errors or omissions it may contain.

### Features

Interior		Exterior		Sizes	
Bedrooms	2	Carports / Parkings	1	Floor Size	111m <sup>2</sup>
Bathrooms	1	Security	Yes		
Kitchens	1	Pool	No		
Recep. Rooms	1	Views	False		
Furnished	No				

