

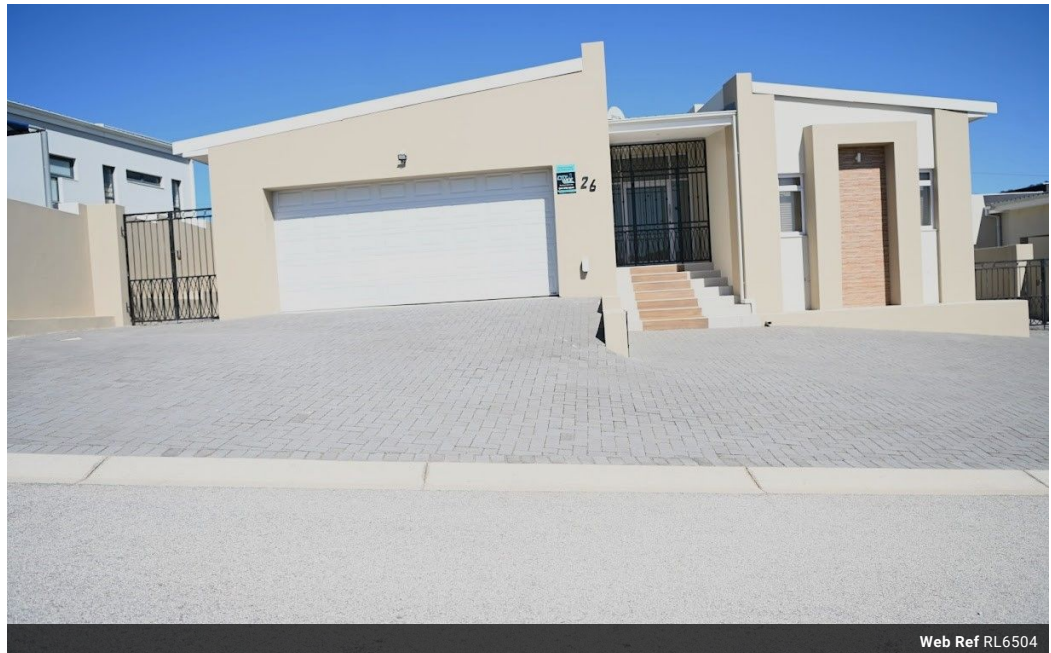


**Nqabisa Gwelana**  
0732612589  
nqabisa@tfre.co.za

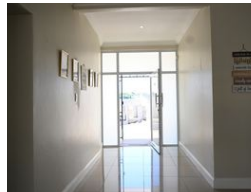
Contact TFRE Gqeberha

041 3602455

236 Cape Road  
Mill Park  
Gqeberha



Web Ref RL6504



**R2,399,000**

4 Bedrooms 2 Bathrooms 2 Garages

**Monthly Bond Repayment** R24,762.20  
Calculated over 20 years at 11% with no deposit.

**Transfer Costs** R105,472.00 **Bond Costs** R36,530.00  
These calculations are only a guide. Please ask your conveyancer for exact calculations.

**Monthly Rates** R2,800

**WELCOME TO THIS STYLISH AND CLASSY HOME WITH MORDEN FINISHES.**

If you want style, class, and modern living, this home is for you.

Located in a highly sought-after area of Lovemore Park, this home is the epitome of elegance and style.

As you step through the highly secured front door, you are greeted by the spacious and inviting living area and dining room with large windows and sliding doors providing plenty of light.

The heart of this home is the beautiful open-plan kitchen with top-tier black finishes featuring a gas hob.

You can access the house through the tiled double-door garage leading to the scullery and into the kitchen.

On the right of the living area, you will find a cosy corner for those romantic dinners for two or just enjoying a glass of wine at sunset.

This house boasts four laminated bedrooms all fitted with built-in cupboards with two bedrooms on the upper level....

**Features**

**Pets Allowed** Yes

**Interior**  
Bedrooms 4  
Bathrooms 2  
Kitchens 1  
Recep. Rooms 2  
Furnished No

**Exterior**  
Garages 2  
Security Yes  
Pool No  
Views False

**Sizes**  
Land Size 578m<sup>2</sup>

