

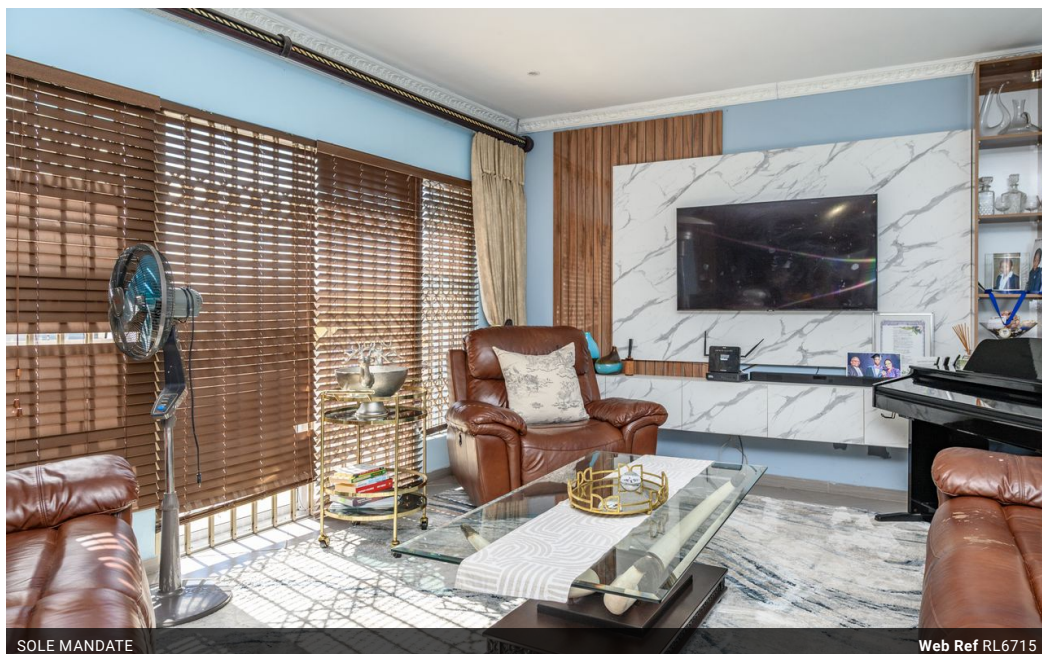


Kwame Nicol
0780531462
kwame@tfre.co.za

Contact TFRE Gqeberha

041 3602455

236 Cape Road
Mill Park
Gqeberha



SOLE MANDATE

Web Ref RL6715



R1,510,000

🛏 3 🚿 2 🏠 2

Monthly Bond Repayment R15,586.04

Calculated over 20 years at 11% with no deposit.

Transfer Costs R46,085.00 **Bond Costs** R28,990.00

These calculations are only a guide. Please ask your conveyancer for exact calculations.

HOME SWEET HOME

Newly renovated, three-bed house very close to Spar in Bluewater Bay.

Spacious lounge with an open-plan, modern-designed kitchen.

Main bed with en-suite bathroom.

Sliding doors lead to the backyard.

Double garage on remote.

Very secure with cameras all round.

Close to all amenities.

Close to the beach.

Every effort has been made to ensure the content of this advert is correct, however, no responsibility will be borne for any errors or omissions it may contain

Features

| Pets Allowed | | Yes | |
|-----------------|----|---------------------|-------|
| Interior | | Exterior | |
| Bedrooms | 3 | Garages | 2 |
| Bathrooms | 2 | Carports / Parkings | 2 |
| Kitchens | 1 | Security | Yes |
| Recep. Rooms | 2 | Pool | No |
| Furnished | No | Views | False |