



Kwame Nicol
0780531462
kwame@tfre.co.za

Contact TFRE Gqeberha

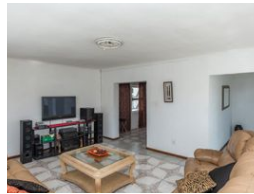
041 3602455

236 Cape Road
Mill Park
Gqeberha



SOLE MANDATE

Web Ref RL5818



R1,330,000

Monthly Bond Repayment R13,728.11
Calculated over 20 years at 11% with no deposit.

Transfer Costs R38,517.00 **Bond Costs** R27,105.00

These calculations are only a guide. Please ask your conveyancer for exact calculations.

🛏 3 🚿 2 🚗 2

HOME SWEET HOME

Large size erf at the old part of Bluewater Bay.

Three huge bedrooms with main en suite. Huge lounge with fire place. Entertainment area with braai. Pool needs cleaning.

Spacious kitchen with dining room.

Double garage.

Backyard for kids to run around.

Very secure and close to all amenities.

Walking distance to the beach.

Every effort has been made to ensure the content of this advert is correct, however, no responsibility will be borne for any errors or omissions it may contain.

Features

Pets Allowed Yes

Interior

Bedrooms	3
Bathrooms	2
Kitchens	1
Recep. Rooms	2
Studies	1
Furnished	No

Exterior

Garages	2
Carports / Parkings	6
Security	No
Pool	Yes
Views	False

