

Talana Foot

Principal Property
Practitioner
Registered with PPRA
(FFC 114 313 2)

082 459 3369
talana@tfre.co.za



Ruan Muller

072 774 9833
ruan@tfre.co.za

Contact TFRE Gqeberha

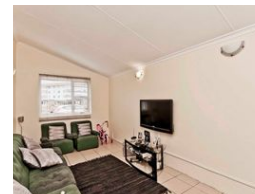
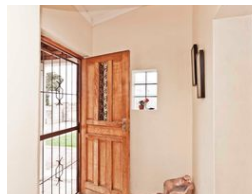
041 3602455

236 Cape Road
Mill Park
Gqeberha



SOLE MANDATE

Web Ref RL6729



R985,000

Monthly Bond Repayment R10,167.06

Calculated over 20 years at 11% with no deposit.

Transfer Costs R30,412.00 **Bond Costs** R23,335.00

These calculations are only a guide. Please ask your conveyancer for exact calculations.

Monthly Rates R750

3 2 2

Are you on the hunt for the ideal family home? Look no further!

Freestanding Home

This 3-bedroom property, situated in Birchwood Street, offers endless possibilities.

Step inside and be greeted by 3 generously sized bedrooms, all with built-in cupboard space.

The kitchen is well-equipped, offering ample storage and workspace, making meal preparation a breeze.

The family bathroom, featuring a bathtub, basin, and toilet, ensures convenience for all occupants.

The 3rd bedroom also offers an en-suite with a shower & toilet.

Outside, both back and front, you'll find ample space, ideal for outdoor gatherings or future extensions and a laundry area.

The carport offers secure parking for two cars and extra space to entertain with a braai area.

With easy access to public transport, educational institutions, and essential amenities, this home is perfectly positioned for a convenient...

Features

Pets Allowed Yes

Interior

| | |
|--------------|----|
| Bedrooms | 3 |
| Bathrooms | 2 |
| Kitchens | 1 |
| Recep. Rooms | 2 |
| Furnished | No |

Exterior

| | |
|---------------------|-------|
| Garages | 2 |
| Carports / Parkings | 6 |
| Security | Yes |
| Pool | No |
| Views | False |

Sizes

| | |
|------------|-------------------|
| Floor Size | 170m ² |
| Land Size | 496m ² |