

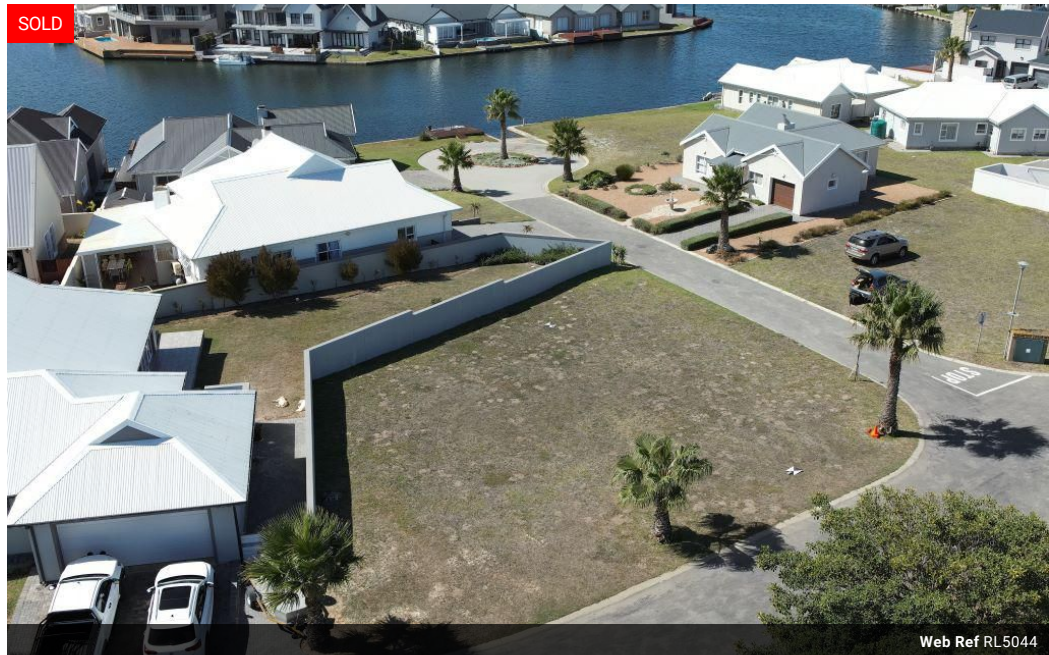


**Gerhardt Joubert**  
0718322548  
gerhardt@tfre.co.za

Contact TFRE Gqeberha

041 3602455

236 Cape Road  
Mill Park  
Gqeberha



**R629,000**

**Monthly Bond Repayment** R6,492.46

Calculated over 20 years at 11% with no deposit.

**Transfer Costs** R23,730.00    **Bond Costs** R17,680.00

These calculations are only a guide. Please ask your conveyancer for exact calculations.

**Monthly Levy** R1,250    **Monthly Rates** R776

## Build Your Dream Home in Marina Martinique – A Secure Coastal Paradise

### Exclusive Sole Mandate

This prime piece of land offers the perfect opportunity to create your ideal holiday retreat or the home you've always envisioned for your retirement. Located in the secure and picturesque Marina Martinique, this stand provides the ultimate combination of tranquillity and convenience.

Just a 5-minute drive to the heart of Jeffreys Bay or the nearest beach, this location ensures you're always close to the action while enjoying the peace of the Marina. For dining and relaxation, the Marina features its restaurant with a private beach, making it an ideal spot for family outings or entertaining guests.

Whether you're looking for a serene getaway or a beautiful place to settle down, this stand has everything you need to turn your dreams into reality.

Don't miss out on this opportunity—call today to...

## Features

