

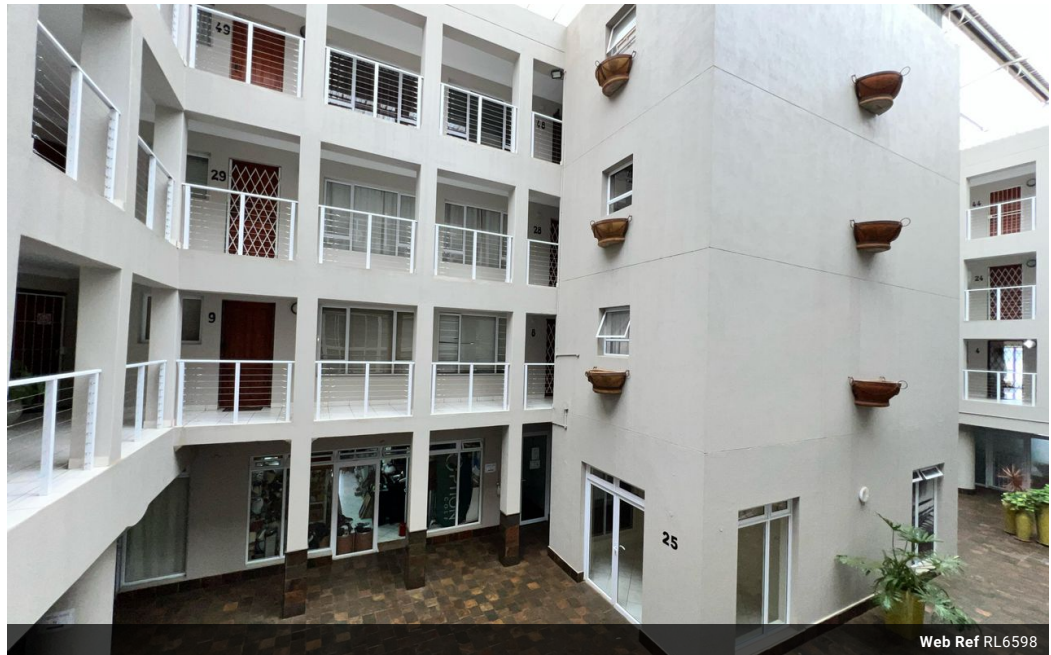


Riana Roux
0717441702
riana@tfre.co.za

Contact TFRE Gqeberha

041 3602455

236 Cape Road
Mill Park
Gqeberha



Web Ref RL6598



R1,075,000

🛏️ 2 🚿 1

Monthly Bond Repayment R11,096.03
Calculated over 20 years at 11% with no deposit.

Transfer Costs R32,749.00 **Bond Costs** R25,220.00

These calculations are only a guide. Please ask your conveyancer for exact calculations.

Monthly Levy R1,650 **Monthly Rates** R802

Beautiful 2-Bedroom Apartment in Central Jeffreys Bay

Beautiful 2-Bedroom Apartment in Central Jeffreys Bay

Prime location within walking distance to the beach, restaurants, and all amenities. This centrally located apartment is an excellent investment opportunity or ideal for a holiday home.

Property Features:

- Two well-sized bedrooms
 - Separate toilet and one bathroom
 - Open-plan kitchen and lounge
 - Closed balcony converted into an additional bedroom and workspace
 - Stairs and escalator access
 - Secure undercover basement parking
- This property is perfect for first-time buyers, investors, or those looking for a convenient lock-up-and-go lifestyle near the ocean.

Contact us today to arrange a viewing.

Every effort has been made to ensure the content of this advert is correct however no responsibility will be borne for any errors or

Features

Interior

| | |
|--------------|----|
| Bedrooms | 2 |
| Bathrooms | 1 |
| Kitchens | 1 |
| Recep. Rooms | 1 |
| Furnished | No |

Exterior

| | |
|---------------------|-------|
| Carports / Parkings | 1 |
| Security | No |
| Pool | No |
| Views | False |

Sizes

| | |
|------------|------------------|
| Floor Size | 87m ² |
|------------|------------------|

