



Nqabisa Gwelana
0732612589
nqabisa@tfre.co.za

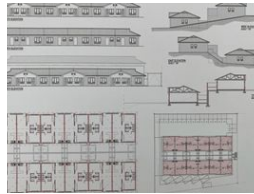
Contact TFRE Gqeberha

041 3602455

236 Cape Road
Mill Park
Gqeberha



Web Ref RL6595



R650,000

Monthly Bond Repayment R6,709.22

Calculated over 20 years at 11% with no deposit.

Transfer Costs R23,730.00 **Bond Costs** R17,680.00

These calculations are only a guide. Please ask your conveyancer for exact calculations.

Vacant Land For Sale in Fort England

CALLING ALL INVESTORS!!!

This spacious plot measuring 1978 squares is situated in Makhanda (previously known as Grahamstown) on Belmont Valley Road. It has been approved to build 12x two-bedroom townhouses with en-suite bathrooms and 24 parking bays. The approval expires in August 2025.

With its prime location close to Fort England Hospital, Makana Municipality, and shopping complex, this land can be developed to accommodate the workers employed in these sectors.

Makhanda is home to Rhodes University and accommodates students from all walks of life. It is also home to Kingswood College, one of the leading boarding schools and Diocesan School for Girls.

Hurry, this bargain won't last very long.

Call me today to arrange for a viewing.

Every effort has been made to ensure the content of this advert is correct, however,...

Features