

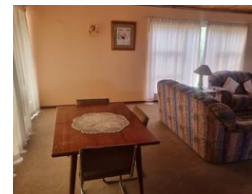


**Steyn Marais**  
0817926588  
steyn@tfre.co.za

Contact TFRE Gqeberha

041 3602455

236 Cape Road  
Mill Park  
Gqeberha



**R1,150,000**

4 2.5 2

**Monthly Bond Repayment** R11,870.17

Calculated over 20 years at 11% with no deposit.

**Transfer Costs** R32,749.00 **Bond Costs** R25,220.00

These calculations are only a guide. Please ask your conveyancer for exact calculations.

**Monthly Rates** R1,049.0

## 4 Bedroom Family Home for sale in Manor Heights, Despatch.

This property is walking distance from Frans Conradie School and positioned just off the main road.

The home is spacious and has lots of potential. There is also a possibility of incorporating a flatlet.

The dwelling offers:

4 Bedrooms, large kitchen, 2.5 bathrooms, 3 living areas, double garage, pool and fully enclosed garden.

View strictly by appointment and make an offer.

Every effort has been made to ensure the content of this advert is correct, however, no responsibility will be borne for any errors or omissions it may contain.

## Features

**Pets Allowed** Yes

**Interior**  
Bedrooms 4  
Bathrooms 2.5  
Kitchens 1  
Recep. Rooms 3  
Furnished No

**Exterior**  
Garages 2  
Security No  
Pool Yes  
Views False

**Sizes**  
Land Size 1,212m<sup>2</sup>

