

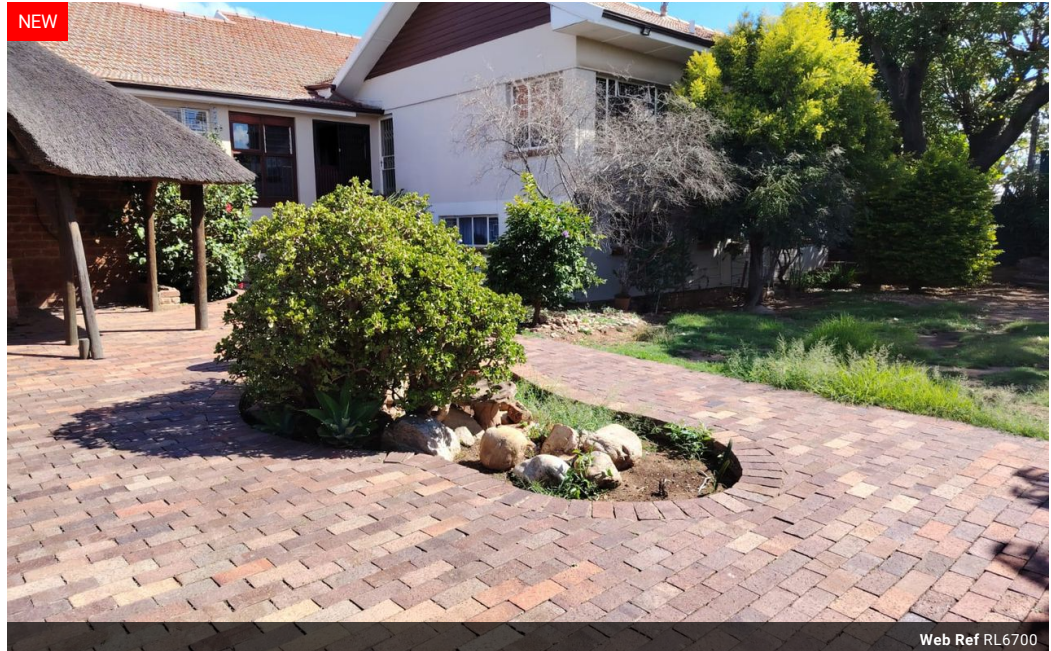


Theo Hill
0842743536
theo@tfre.co.za

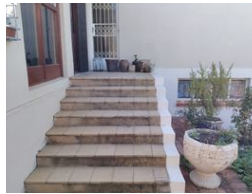
Contact TFRE Gqeberha

041 3602455

236 Cape Road
Mill Park
Gqeberha



Web Ref RL6700



R1,999,000

Monthly Bond Repayment R20,633.45
Calculated over 20 years at 11% with no deposit.

Transfer Costs R75,146.00 **Bond Costs** R32,760.00

These calculations are only a guide. Please ask your conveyancer for exact calculations.

4 3

Stylish & Spacious Home in the Heart of Despatch!

Stylish & Spacious Home in the Heart of Despatch!

This elegant property is ideally located—close to all amenities yet in a peaceful street. It offers everything you need for comfortable family living!

- 4 Bedrooms with built-in cupboards
- 3 Bathrooms (Main bedroom with en-suite)
- Large Lounge with a Cozy Fireplace
- Dining Room conveniently next to the kitchen
- Spacious Kitchen with built-in cupboards, a stove, and a double eye-level oven
- Scullery & Laundry Room with ample space for appliances
- 2 Study Rooms – ideal for working from home
- Expansive Family/TV Room with air conditioning and a gas fireplace

Outdoor & Extra Features:

- Covered Lapa with a built-in braai – perfect for entertaining
- Additional Outside Room – ideal as a game room
- Basement Area with its bathroom

Features

Pets Allowed Yes

Interior

Bedrooms	4
Bathrooms	3
Kitchens	1
Recep. Rooms	3
Studies	2
Furnished	No

Exterior

Carports / Parkings	4
Security	Yes
Pool	No
Views	False

Extras

Laundry Scullery Lapa Fireplace

