



**Sharron Nortier**  
0827830506  
sharron@tfre.co.za



**Shane Williams**  
0843075148  
shane@tfre.co.za

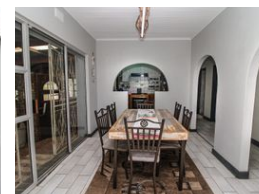
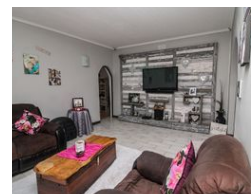
Contact TFRE Gqeberha

041 3602455

236 Cape Road  
Mill Park  
Gqeberha



Web Ref RL6171



**R1,150,000**

3 2 1

**Monthly Bond Repayment** R11,870.17

Calculated over 20 years at 11% with no deposit.

**Transfer Costs** R32,749.00 **Bond Costs** R25,220.00

These calculations are only a guide. Please ask your conveyancer for exact calculations.

**Monthly Rates** R790

Priced to Sell!

Located in the serene neighbourhood of Bothasrus, this delightful family home offers proximity to essential amenities. Ideal for families seeking comfort and convenience, this property awaits new owners to appreciate its warmth and appeal.

Situated on a fully enclosed plot, the property features a well-maintained front garden that enhances its appeal. The interior boasts a spacious kitchen with built-in cupboards, ensuring ample storage space for culinary essentials. Adjacent to the kitchen, a dedicated dining room provides a perfect setting for family meals.

The home includes a cosy lounge area. The Entertainment area features a built-in braai, ideal for hosting gatherings and enjoying outdoor dining.

There are three bedrooms, offering privacy and comfort for all family members.

Additionally, the property comprises two...

## Features

Pets Allowed		Yes			
Interior		Exterior		Sizes	
Bedrooms	3	Garages	1	Land Size	892m²
Bathrooms	2	Carports / Parkings	2		
Kitchens	1	Security	No		
Recep. Rooms	2	Pool	No		
Studies	1	Views	False		
Furnished	No				

