



Kwame Nicol
0780531462
kwame@tfre.co.za

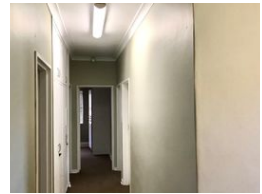
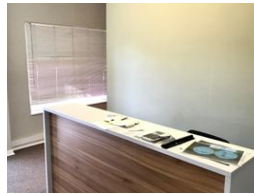
Contact TFRE Gqeberha

041 3602455

236 Cape Road
Mill Park
Gqeberha



Web Ref CL269



R1,800,000

0 0

CALLING ALL INVESTORS

SOLE MANDATE: Reception with seven offices, King Edward Street, Newton Park.
Easy to use as residential
Very neat and well-maintained.
Very secure, walled, and fenced.
Enough space for parking.
Close to all amenities.

Every effort has been made to ensure the content of this advert is correct, however, no responsibility will be borne for any errors or

Features

Zoning Commercial

Sizes
Floor Size 230m²

